

Pull head

www.star.de.com



Pull head short spigot



SDR 17 SDR 11

Art.-No	Art.-No	d1 [mm]	L [mm]	le1 [mm]	M	di	Fmax [kn]		kg	
							[SDR 17]	[SDR 11]	[SDR 17]	[SDR 11]
46106041	46106042	40	118	55	12	30	2,8	4,2	0,27	0,27
46106051	46106052	50	123	55	12	30	4,4	6,6	0,30	0,31
46106061	46106062	63	137	60	16	35	7,1	10,4	0,51	0,52
46106071	46106072	75	162	80	16	35	10	14,6	0,67	0,68
46106091	46106092	90	186	95	20	40	14,4	21,1	1,24	1,26
46106111	46106112	110	234	105	30	60	21,4	31,4	3,29	3,32
46106121	46106122	125	239	105	30	60	27,3	40,7	3,72	3,76
46106141	46106142	140	249	115	30	60	34,3	50,8	4,26	4,31
46106161	46106162	160	259	125	30	60	44,9	66,7	4,96	5,03
46106181	46106182	180	279	135	30	60	56,9	84,3	6,91	7,00
46106201	46106202	200	314	160	30	60	70,3	103,9	8,38	8,51
46106221	46106222	225	343	180	36	70	89,1	131,7	11,53	11,70
46106251	46106252	250	358	190	36	70	109,4	160	13,81	14,04
46106281	46106282	280	397	195	42	80	137,4	203,2	20,89	21,19
46106311	46106312	315	402	210	42	80	174,1	240	25,67	26,05
46106351	46106352	355	458	225	48	90	221,3	320	39,30	39,82
46106401	46106402	400	483	240	48	90	280,2	320	49,22	49,92
46106451	46106452	450	498	255	48	90	320	320	60,93	63,23
46106501	46106502	500	523	270	48	90	320	320	75,89	78,88
46106561	46106562	560	558	290	48	90	320	320	97,68	101,72
46106631	46106632	630	593	315	48	90	320	320	133,58	139,02
46106711	46106712	710	633	345	48	90	320	320	176,94	184,38

Pull head long spigot

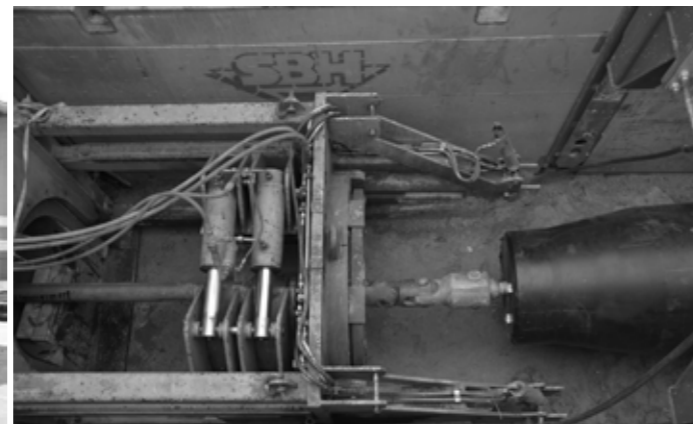


SDR 17 SDR 11

Art.-No	Art.-No	d1 [mm]	L [mm]	le1 [mm]	M	di	Fmax [kn]		kg	
							[SDR 17]	[SDR 11]	[SDR 17]	[SDR 11]
46105041	46105042	40	218	100	12	30	2,8	4,2	0,30	0,32
46105051	46105052	50	223	100	12	30	4,4	6,6	0,35	0,38
46105061	46105062	63	237	100	16	35	7,1	10,4	0,60	0,64
46105071	46105072	75	262	100	16	35	10	14,6	0,78	0,84
46105091	46105092	90	336	150	20	40	14,4	21,1	1,50	1,62
46105111	46105112	110	384	150	30	60	21,4	31,4	3,67	3,85
46105121	46105122	125	389	150	30	60	27,3	40,7	4,20	4,44
46105141	46105142	140	399	150	30	60	34,3	50,8	4,86	5,16
46105161	46105162	160	409	150	30	60	44,9	66,7	5,76	6,15
46105181	46105182	180	429	150	30	60	56,9	84,3	7,92	8,42
46105201	46105202	200	464	150	30	60	70,3	103,9	9,63	10,25
46105221	46105222	225	493	150	36	70	89,1	131,7	13,11	13,91
46105251	46105252	250	608	250	36	70	109,4	160	16,84	18,36
46105281	46105282	280	647	250	42	80	137,4	203,2	24,69	26,60
46105311	46105312	315	702	300	42	80	174,1	240	31,33	34,18
46105351	46105352	355	758	300	48	90	221,3	320	46,51	50,13
46105401	46105402	400	783	300	48	90	280,2	320	58,35	63,00
46105451	46105452	450	798	300	48	90	320	320	73,21	80,30
46105501	46105502	500	873	350	48	90	320	320	93,23	103,11
46105561	46105562	560	908	350	48	90	320	320	119,40	132,13
46105631	46105632	630	943	350	48	90	320	320	161,09	177,53
46105711	46105712	710	983	350	48	90	320	320	211,82	233,30



Pull head d 800 SDR7,4



Pull head d 1000 SDR17

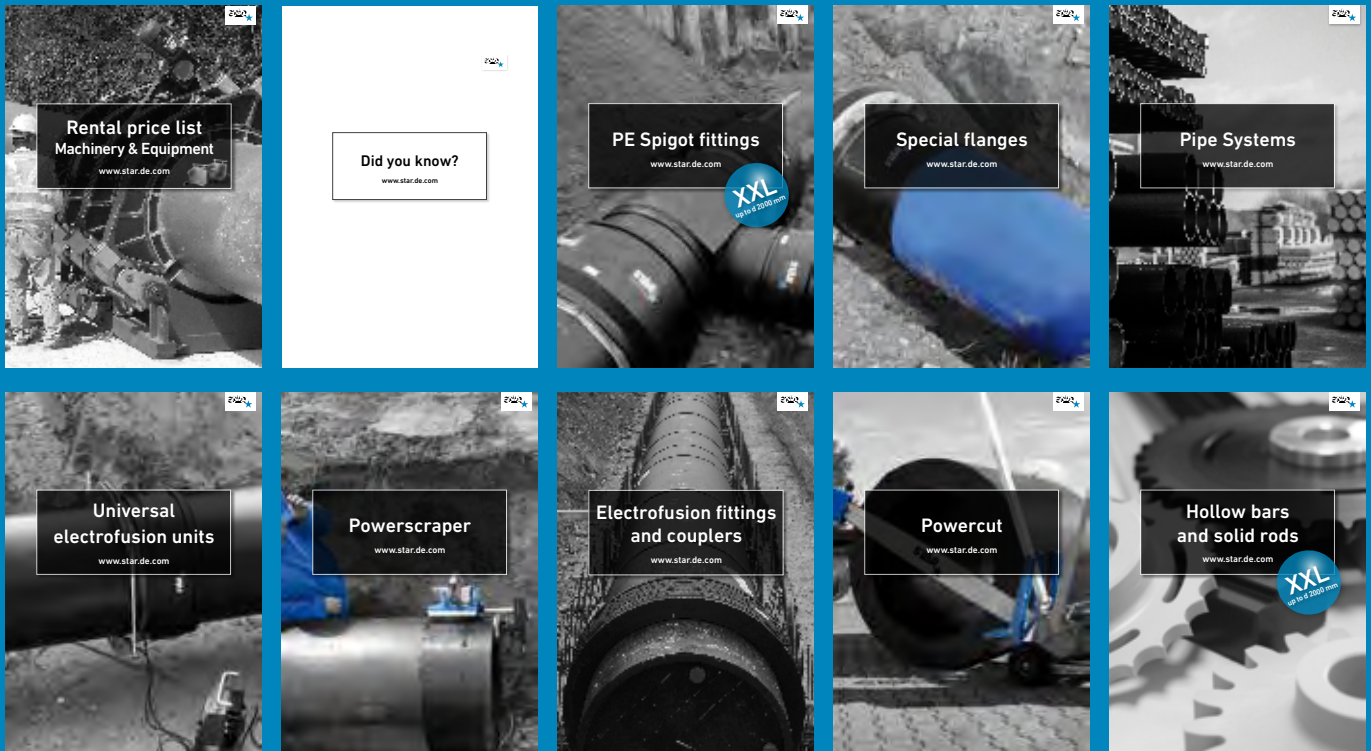
Special versions, e.g. for swagelining procedure and other pulling forces on request.



The maximum pull force shall not exceed the max. allowed pull force of the ring nut and the pipe. The indicated max. allowed pull forces for PE100 pipe are based on DVGW GW 320-2 (June 2000). According to that directive the values have to be decreased by 10% in case of a pulling duration of >10h or are to be decreased by 25% for a pulling duration of >20h.

The towing rope has to be attached to the pull head using a rotating shackle / swivel connector.

1 kn = 0,1 t



We provide you with high-quality and efficient solutions for applications in supply and disposal.

In addition to our high-quality standard and special fittings, seamless bends, electrofusion fittings, pipes and hollow bars and solid rods, we also offer suitable welding equipment for joining and welding technique.

Our extensive product range gives you the possibility to obtain every-thing from a single source and for almost every building project.

See for yourself.

STAR Piping Systems GmbH

Am Schornacker 90, 46485 Wesel
Deutschland

Tel.: + 49 281 - 9 84 14 - 0

Fax: + 49 281 - 9 84 14 - 44

www.star.de.com