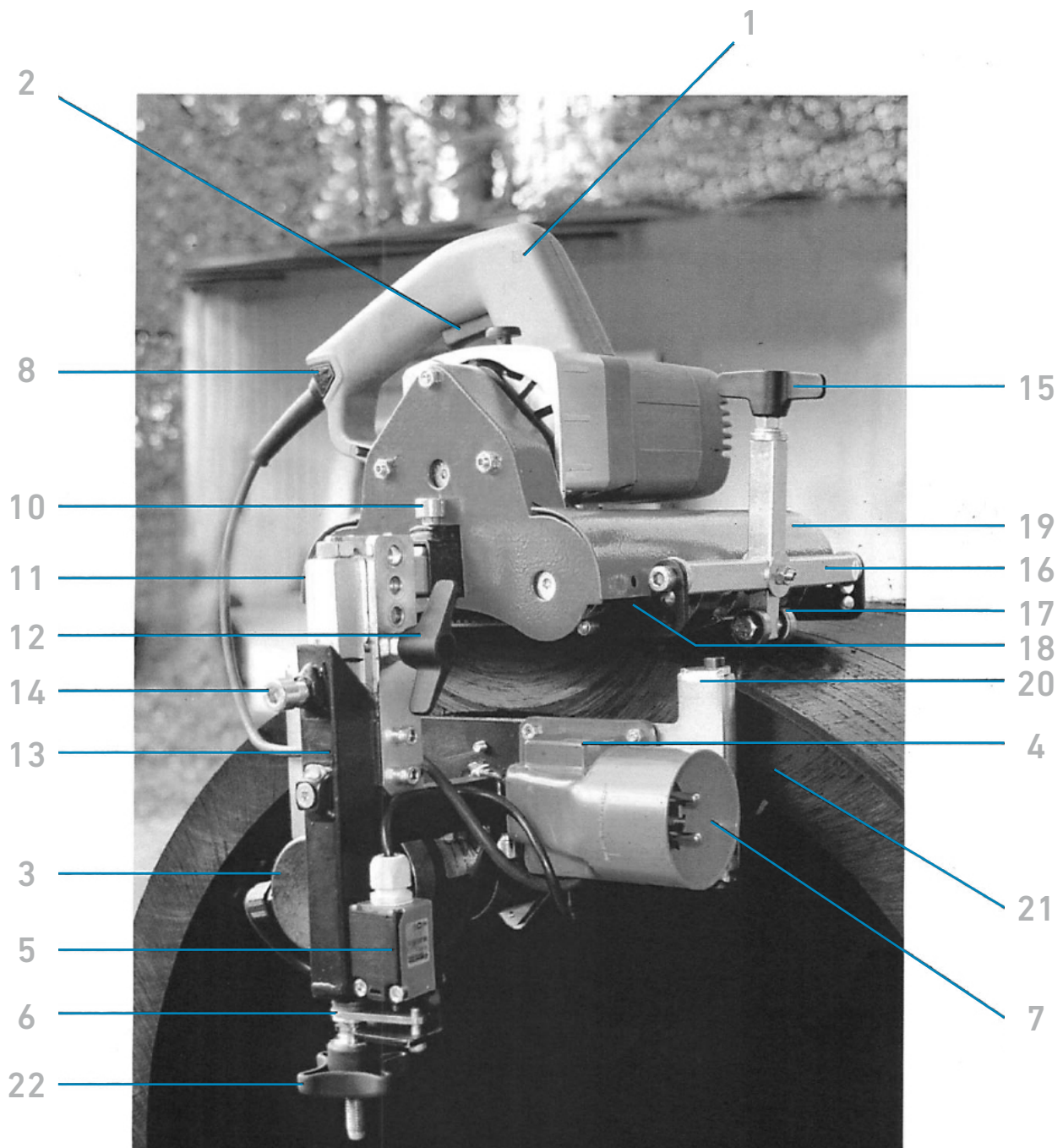


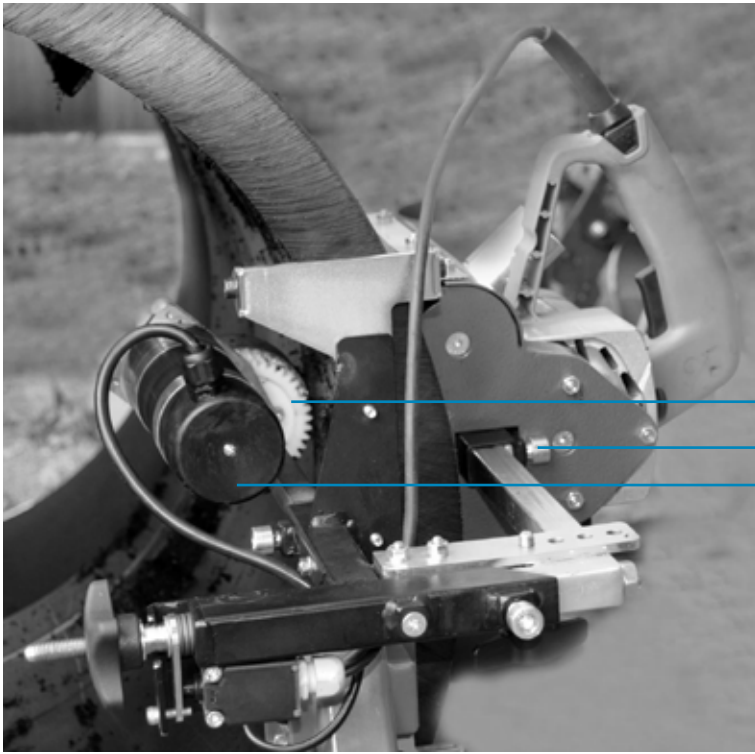


**OPERATING INSTRUCTIONS**  
**POWERSCRAPER 175**

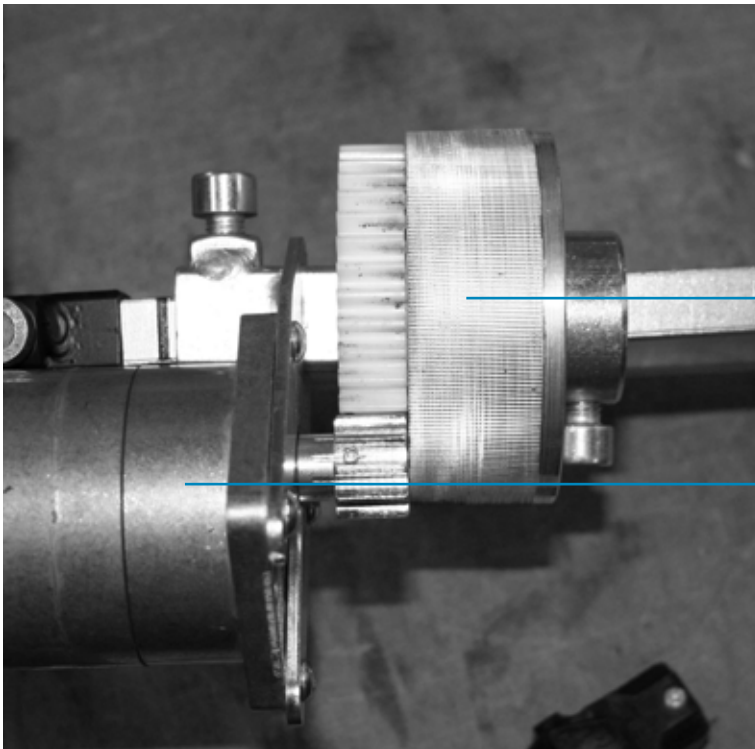
Scraping machine for PE  
pipes d 355 - 1400 mm



- |   |                        |    |                            |    |                    |
|---|------------------------|----|----------------------------|----|--------------------|
| 1 | Scraping unit          | 9  | output for vacuum cleaning | 17 | Support wheels     |
| 2 | Scraping unit switch   | 10 | Fixing screw               | 18 | scraping body      |
| 3 | Transport drive        | 11 | Mounting rod               | 19 | Machine housing    |
| 4 | Transport drive switch | 12 | Tension screw for bar      | 20 | Stop roller        |
| 5 | Safety switch          | 13 | Movable mounting rod       | 21 | Driving wheel      |
| 6 | Switching plate        | 14 | Fixing screw               | 22 | Tension hand screw |
| 7 | Power connection       | 15 | Setting spindle            |    |                    |
| 8 | Scraping motor plug    | 16 | Spindle holder             |    |                    |

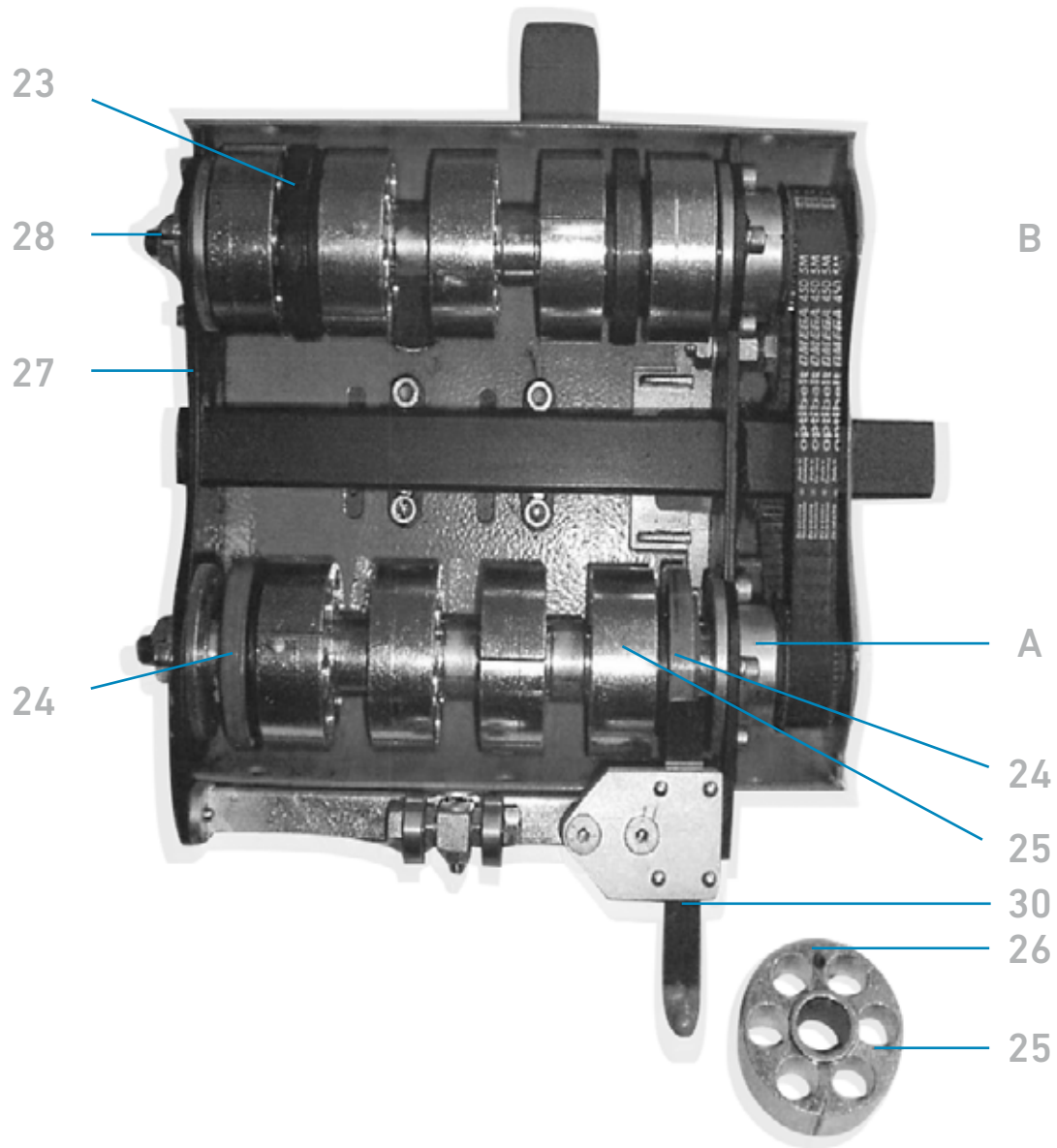


10 Fixing screw



21 Driving wheel

3 Transport drive



- A front scraping unit
- B rear scraping unit
- 23 black distance rollers
- 24 red (yellow or blue) distance rollers
- 25 blade wheel

- 26 marking point, has always to be mounted to the thread side
- 27 bearing shield
- 28 fixing nut (counter clockwise turning thread)
- 30 calibration blade

## ■ Safety first

To avoid problems and accidents read the manual carefully before the first use.

Check the STAR POWERSCRAPER 175 and the power connection cord for damages and make sure that all screws are tight as first step every time you use it.

Don't use it if has damages or when it is wet.

Make sure the power supply has a RCD 30 mA and a correct earth connection. The power connection cord must be designed for 2000W (10A) or more.

Use a vacuum cleaner to avoid material stuffing in the STAR POWERSCRAPER 175. Make sure that the pipe cannot move and there is enough room to move around the pipe.

Don't let the STAR POWERSCRAPER 175 run without observation.

The STAR POWERSCRAPER 175 may only be switched on while it is mounted correctly onto a pipe. Keep away from any moving parts especially the blades while the STAR POWERSCRAPER 175 is connected to the mains.

## Advantages

- time savings
- moves automatically
- comfortable scraping process
- adjustable scraping depth
- suitable up to d 1400 mm

## Technical Data

- Scraping width: 175- 350 mm
- Scraping depth: 0.2 mm, 0.4 mm
- Scraping speed: 0.8 m/min
- Weight: 16 kg
- Power scraping motor: 1600 W
- Power Driving motor: 150 W
- Rating: 230 V / 50 Hz

The STAR POWERSCRAPER 175 is used to scrape PE- and PP-pipes from d 355 mm up to d 1400 mm according to the requirements for electro fusion fittings.

The scraping length is 175 mm in one pass. For scraping lengths up to 350 mm it can be used with different settings in a second pass.

### ■ Mounting the STAR POWERSCRAPER 175

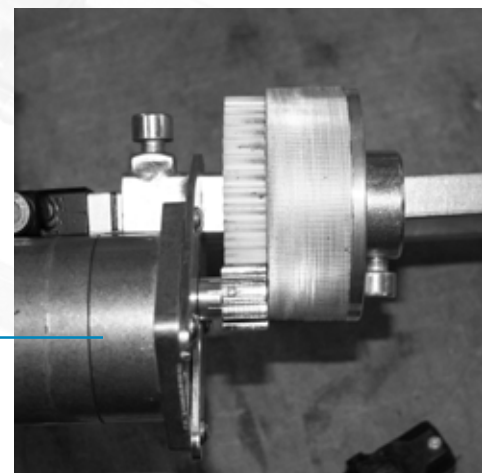
The movable mounting rod (13) which carries the transport drive (3) is moved away from the mounting rod (11) by turning tension hand screw (22). Do this until the STAR POWERSCRAPER 175 can be moved over the pipe wall.

The stop rollers (20) shall touch the pipe end. The driving wheel should be in the middle of the scraping unit (1). It can be moved after loosening the two fixing screws which keep the transport drive in place.

Now the movable mounting rod (13) is moved towards the mounting rod (11) using the tension hand screw until the switching plate (6) is pressed firmly down to the safety switch (5). Now the power for the scraping unit is activated.

Tighten fixing screw (12) and tension screw (14) before starting the scraping.

21 Driving wheel

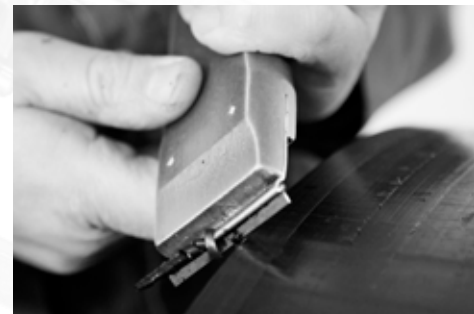
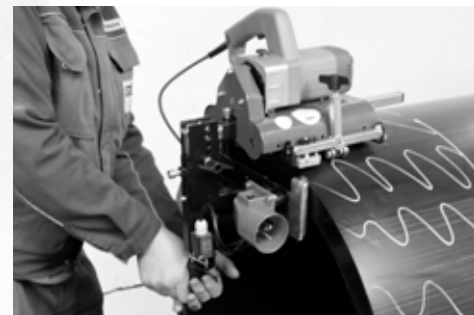


### ■ Scraping (scraping length = 175 mm)

Using the setting spindle (15) the support wheels (17) are moved onto the surface of the pipe until the front scraping unit (A) is lifted 1 – 2 mm off the pipe and has no contact to the surface. Now the scraping unit can be started with scraping unit switch (2).

After that the setting spindle is turned until the front scraping unit hits the pipe and the support wheels are lifted off some mm. The transport drive (3) is activated by transport drive switch (4) and the STAR POWERSCRAPER 175 starts the scraping process. As soon as the front scraping unit (A) reaches complete scraped surface the support wheels (17) are moved down until the front scraping unit is lifted off as described before. When the scraping sound gets less loud the scraping has finished and the machine can be switched off.

Small leftovers sticking to the pipe are normal and can be removed easily by hand or with the pipe of the vacuum cleaner. The diameter of the pipe should be controlled by using a PI-Tape. If the diameter is still too large, the scraping procedure can be repeated.



### ■ Scraping length 350 mm

If the scraping length has to be more than 175 mm the STAR POWERSCRAPER 175 is operated as described before.

After that the STAR POWERSCRAPER 175 is taken from the pipe and the fixing screw (10) is loosened. After that the scraping unit is moved to the other end of the mounting rod. Now the drive unit is loosened and moved into the middle of the scraping unit also.

Then the STAR POWERSCRAPER 175 is put back onto the pipe and fastened as described under Mounting. Having done this, it can be operated as described under Scraping.

### ■ Scraping length from 175 mm to 350 mm

Use the STAR POWERSCRAPER 175 as described under Scraping first. Then move the scraping unit and the transportation drive as described before to the desired length.

Now put the small calibration blade (30) with the same colour as the distance rolls in the front scraping unit into the small slot mounted to the setting spindle bar (16) to make sure that only the still unscraped surface is scraped now.



## ■ Changing the distance rollers / blade wheels

To change the distance rollers or the blade wheels remove the fixing nuts (28) and the screws around them.

### Attention:

The fixing nuts (28) have left-handed threads.

Take off the bearing shield (27). Than you can take all blade wheels and distance rollers off the axles.

After reassembling make sure that all screws are tight.

If you want to replace the wheel blades you have to disassemble both scraping units, to change the distance rollers only disassemble the front scraping unit (A).

The STAR POWERSCRAPER 175 comes with red distance rollers installed. With these the scraping depth is 0.2 mm. With the yellow distance rollers it can be set to a scraping depth of 0.4 mm.

The blade wheels (25) have to be installed with the drilled marking points (26) on the side where the fixing nut is.

### Servicehotline

STAR Piping Systems GmbH  
Am Schornacker 90  
46485 Wesel, Deutschland  
Tel. +49 (0) 281 - 9 84 14 - 0  
Fax +49 (0) 281 - 9 84 14 - 48  
info@star.de.com  
www.star.de.com